

EMC 日規單相 AC 雙 π 電源雜訊抑制濾波器

AC Power Single-Phase Two-Stage EMI Filter (Japan type)



Product Features

- Suppressing the inrush current when equipment power on
- Increase equipment tolerance to voltage transients
- Bidirectional filtering between power grid and equipment
- Designed with compact size for easy installation.
- Rated currents from 1 to 30A

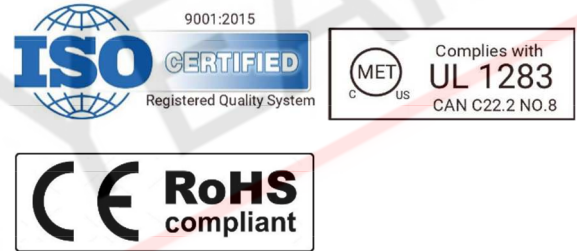
產品特點

- 抑制湧浪電流
- 增強對電壓瞬變的耐受程度
- 電源與電網間雙向濾波
- 尺寸小巧·方便安裝
- 本系列支援最高 30A 的電流

Technical Specifications

Rated voltage	0~250 VAC
Rated currents	1 to 30A @ 40°C
Overload current	1.2 × Rated Current (1 min./hour)
Max Leakage current	≤ 5 mA @ 250v/60Hz
Temperature range	-25 to +85 °C
Temperature rise	≤ 30°C
High potential test voltage	L → E 2000 VAC / 2250 VDC L → N 2500 VDC
Insulation Resistance	L → E ≥ 3000MΩ L → N ≥ 2000MΩ
Certified to	UL 1283, EN55011, EN55022, CISPR 16-2-3, EN/IEC 60950, 61000

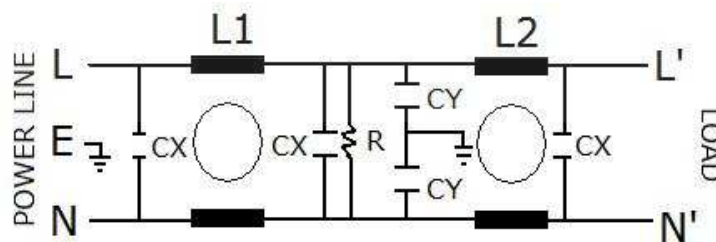
Approvals & Compliances



Applications

- Electrical and electronic equipment
- Datacom equipment
- Building automation
- Industrial applications
- Switch Mode Power Supply

Typical Electrical Schematic



AC circuit (Two-stage)

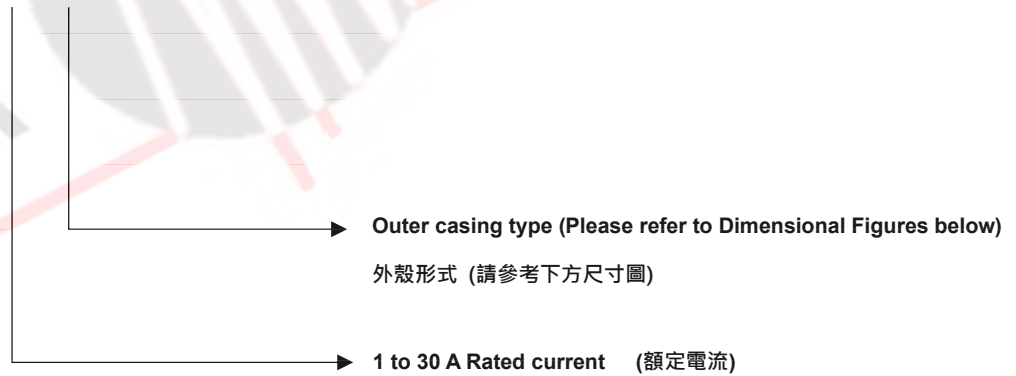
AC 電源濾波電路(雙 π 迴路)

Filter Selection Table

Model	Rated current @ 40°C [A]	Rated voltage [VAC]	Resistance L-L' (±15%) [mΩ]	Power loss (total ±15%) [W]
HUA-9010-L101-□	1	0~250	25	0.25
HUA-9010-L103-□	3		28	0.252
HUA-9010-L106-□	6		23	0.828
HUA-9010-L110-□	10		14.2	1.42
HUA-9010-L115-□	15		13	2.925
HUA-9010-L120-□	20		12	4.8

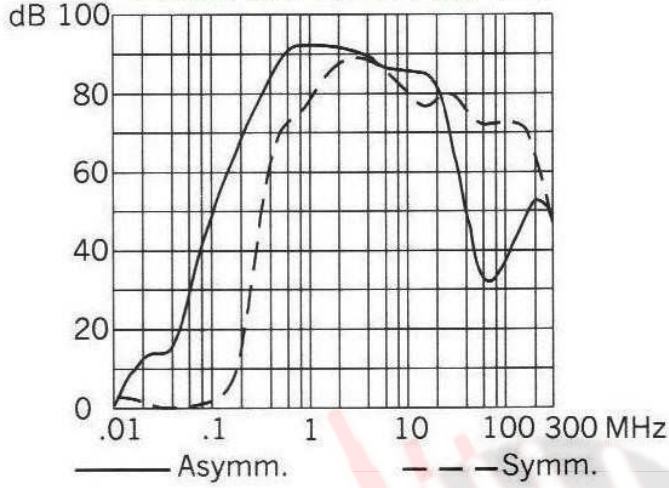
Product Selector

HUA – 9010 – L1□ - □

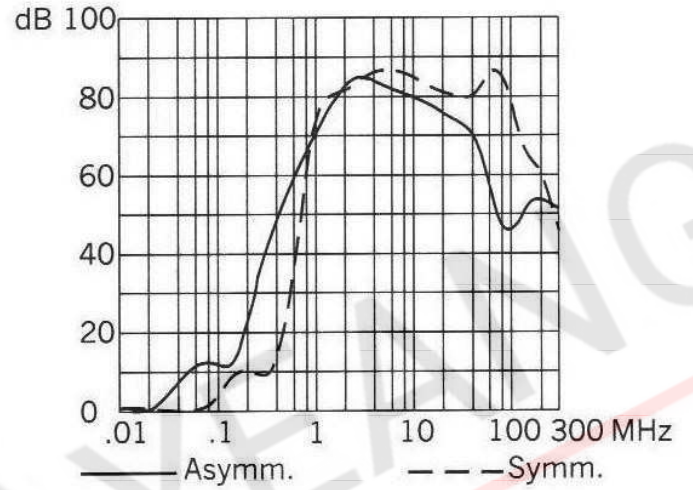


Insertion Loss (衰減值)

- HUA-9010-L101-
- HUA-9010-L103-
- HUA-9010-L106-
- HUA-9010-L110-

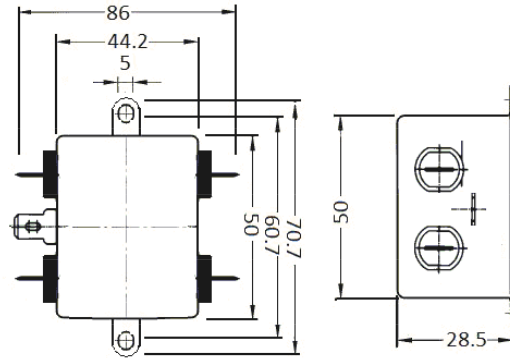


- HUA-9010-L115-
- HUA-9010-L120-

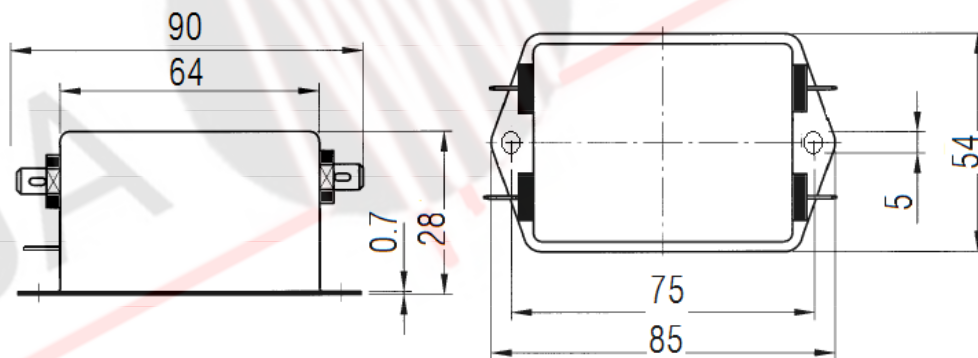


Dimensional Figures (尺寸圖) (Unit : mm)

TC1

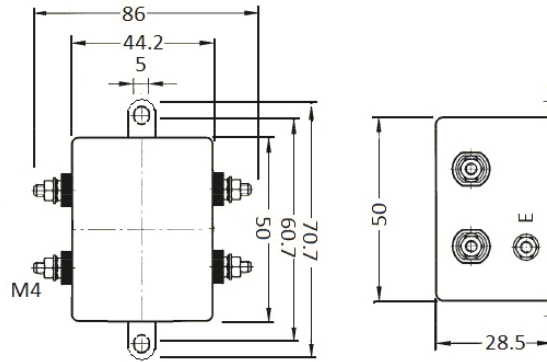


T



Dimensional Figures (尺寸圖) (Unit : mm)

SC1



S

