

HUA 單相(開關+插座+FUSE)電源雜訊抑制濾波器

EMC-RFI Suppression Filters 1-phase systems

HUA Series, all-purpose filters to Protection Class I.

0~250VAC 50/60HZ θ_a 40°C

EN55011 CLASS A / CISPR22 CLASS B / EN 60950

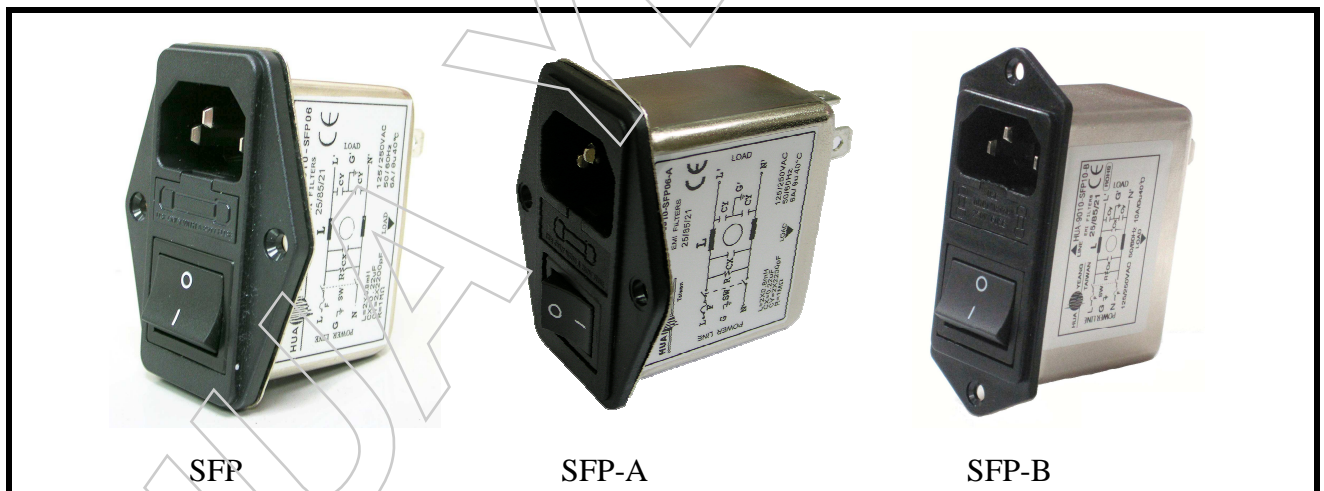
CONFORMS
TO IEC 60 950
UL 1283
EN 133200

CE

COMBI-FILTER 1-stage with 2-pole switch, drawer for 1 fuse 5x20 mm ,connector conforms to IEC 60320-1/C14.

The SFP series mains filters meet the stringent requirements of modern, electronic equipment and instrumentation machine design and manufacturing, A very wide range of frequencies with high attenuation.

本 SFP 系列電源濾波器符合嚴格現代化的電子設備和儀器儀表機器設計的要求和製造，具有高衰減的一個很廣泛的頻率範圍。



Specification

Test Voltage (1 min) : L to E 1500VAC/2250VDC

L to L 1500VDC

Insulation Resistance : L to E $\geq 3000M\Omega$

L to L $\geq 2000M\Omega$

Current reduction above 40°C ambient temperature:

$$I = I_n \sqrt{(85 - \theta) / 45} \quad \theta = \text{operating temperature}$$

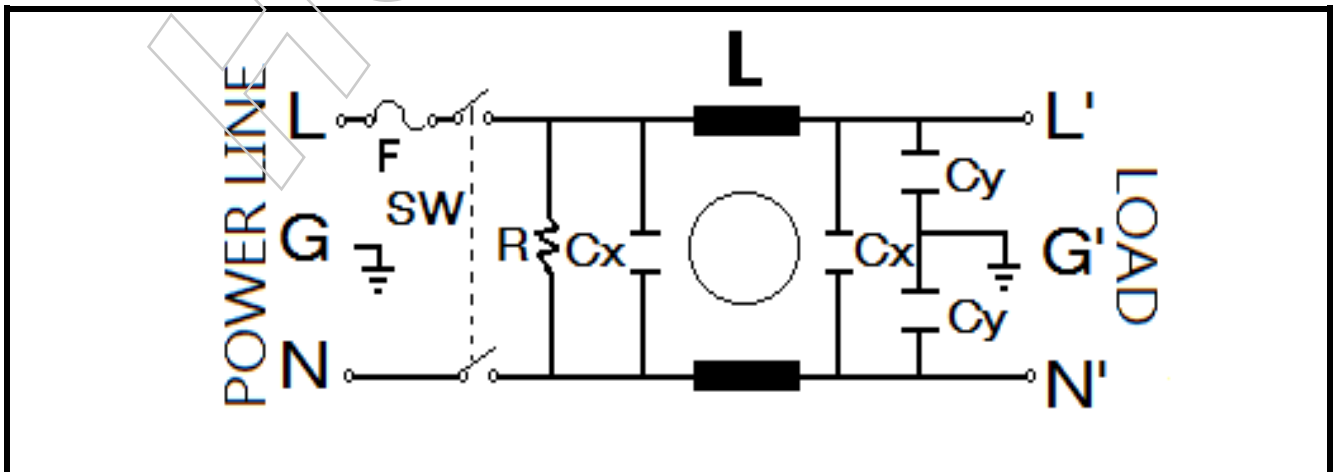
大開關 (Big Switch) 單保險絲 (FUSE*1)

TYPE	In @ $\delta a 40^{\circ}C$ [A]	Umax 50/60Hz [v]	Overload Current	Resistance L-L' $\pm 15\%$ [m Ω]	Power Dissipation total $\pm 15\%$ [W]	Max. leakage current @250v/60hz [mA]	Temperature Rise $^{\circ}C$	Temperature Range $^{\circ}C$
HUA-9010-SFP01	1	0~250	1.5×In	100	0.1	≤ 5	≤ 30	-25~+85
HUA-9010-SFP03	3		1 min.	100	0.9		≤ 30	-25~+85
HUA-9010-SFP06	6		per hour	100	3.6		≤ 30	-25~+85
HUA-9010-SFP10	10		100	10	≤ 30		-25~+85	

小開關 (Small Switch) 單保險絲 (FUSE*1)

TYPE	In @ $\delta a 40^{\circ}C$ [A]	Umax 50/60Hz [v]	Overload Current	Resistance L-L' $\pm 15\%$ [m Ω]	Power Dissipation total $\pm 15\%$ [W]	Max. leakage current @250v/60hz [mA]	Temperature Rise $^{\circ}C$	Temperature Range $^{\circ}C$
HUA-9010-SFP01-A	1	0~250	1.5×In	100	0.1	≤ 5	≤ 30	-25~+85
HUA-9010-SFP03-A	3		1 min.	100	0.9		≤ 30	-25~+85
HUA-9010-SFP06-A	6		per hour	100	3.6		≤ 30	-25~+85
HUA-9010-SFP10-A	10		100	10	≤ 30		-25~+85	

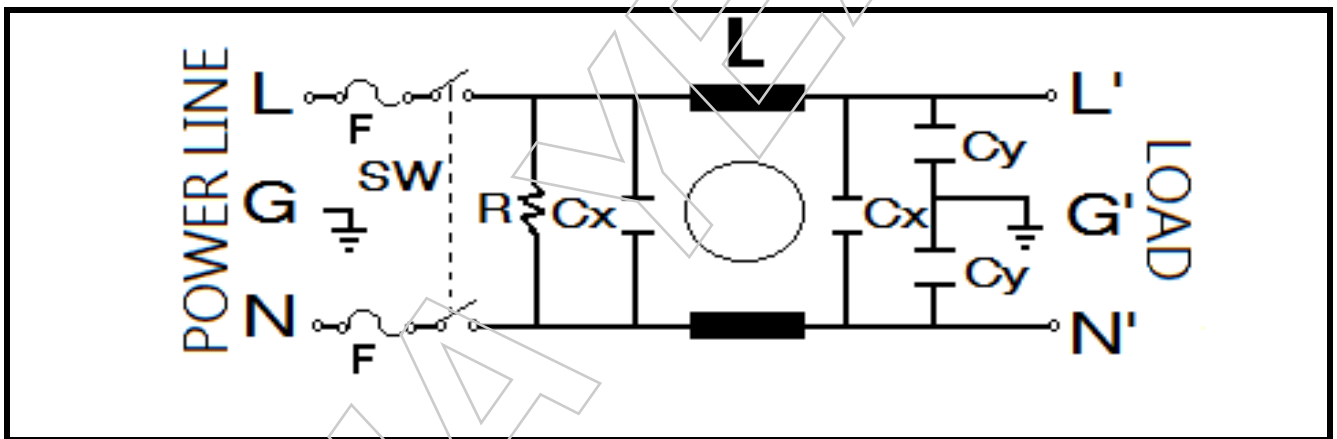
Circuit Diagram 單保險絲 (FUSE*1)



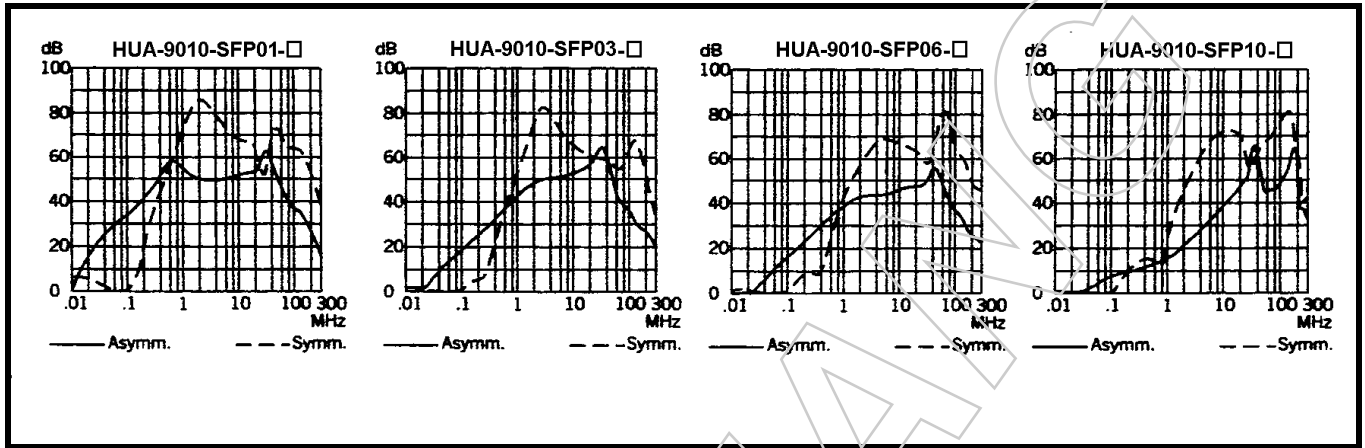
大開關 (Big Switch) 雙保險絲 (FUSE*2)

TYPE	In @ $\delta a 40^{\circ}C$ [A]	Umax 50/60Hz [v]	Overload Current	Resistance L-L' $\pm 15\%$ [m Ω]	Power Dissipation total $\pm 15\%$ [W]	Max. leakage current @250v/60hz [mA]	Temperature Rise $^{\circ}C$	Temperature Range $^{\circ}C$
HUA-9010-SFP01-B	1	0~250	1.5×In 1 min. per hour	100	0.1	≅5	≅30	-25~+85
HUA-9010-SFP03-B	3			100	0.9		≅30	-25~+85
HUA-9010-SFP06-B	6			100	3.6		≅30	-25~+85
HUA-9010-SFP10-B	10			100	10		≅30	-25~+85

Circuit Diagram 雙保險絲 (FUSE*2)



Insertion loss



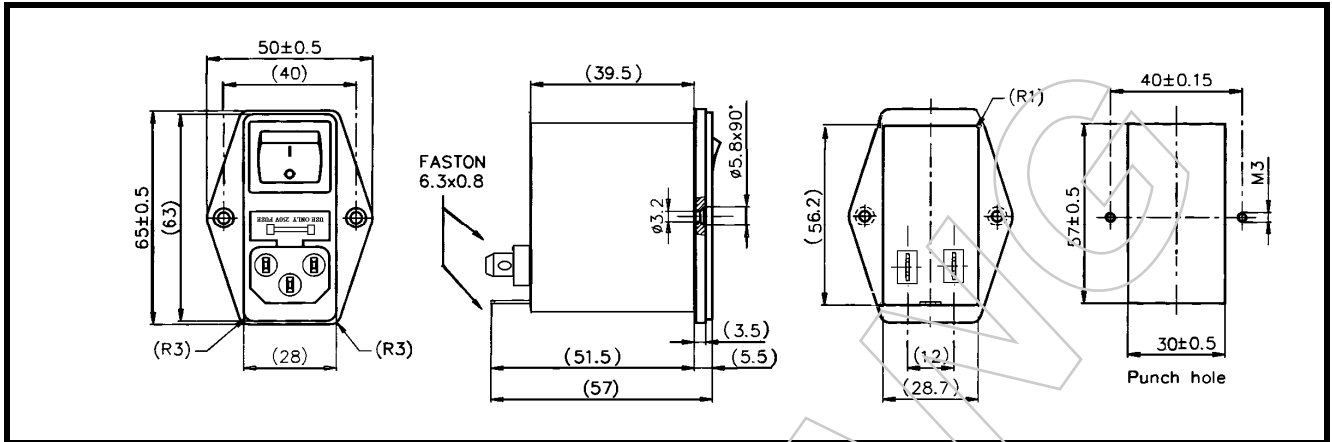
Order Types (訂購型號說明)

型號:HUA -9010-SFP □- □

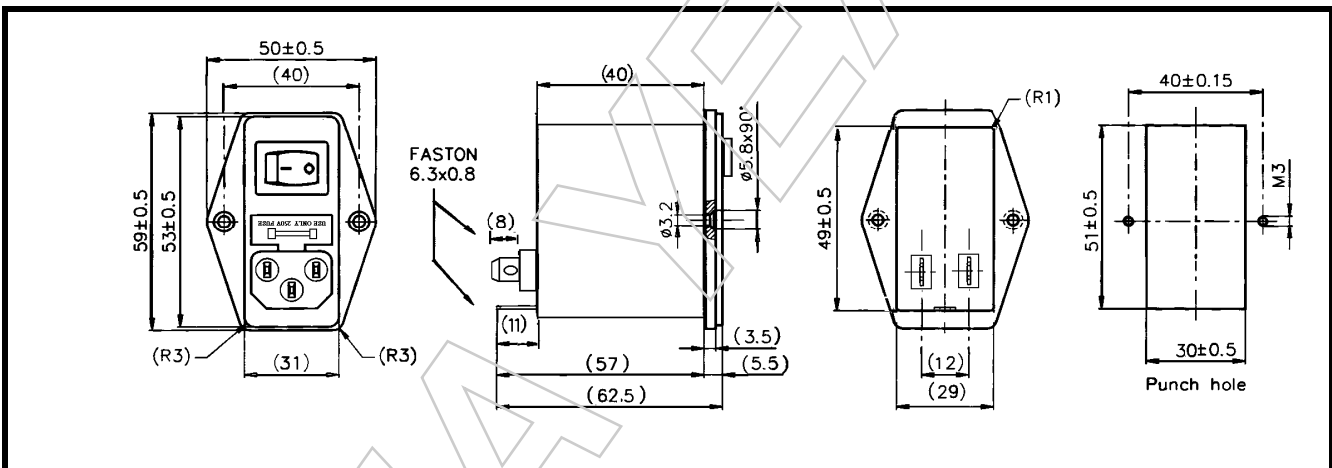
- └─┬─> 無:大開關 (Big Switch) 單保險絲 (FUSE*1)
- A :小開關 (Small Switch) 單保險絲 (FUSE*1)
- B :大開關 (Big Switch) 雙保險絲 (FUSE*2)
- └─> 01:表示 1A 額定電流
- 03:表示 3A 額定電流
- 06:表示 6A 額定電流
- 10:表示 10A 額定電流

Dimension(mm)

SFP 大開關 (Big Switch) 單保險絲 (FUSE*1)



SFP-A 小開關 (Small Switch) 單保險絲 (FUSE*1)



SFP-B 大開關 (Big Switch) 雙保險絲 (FUSE*2)

